

No-Hub Couplings

List Price Schedule NHC-607
Effective June 8, 2007
(Updated September 15, 2009)
Supersedes Price Schedule NHC-107

Possession of this price list shall not be construed as an offer to sell the products listed.
Charlotte Pipe and "You can't beat the system" are registered trademarks of Charlotte Pipe and Foundry Company.
© 1961-2009 Charlotte Pipe and Foundry Company



CISPI 310 & ASTM C 1277

>> No-Hub Couplings

Size	UPC# 611942-	Approximate Weight Each (lbs.)	No. Per Carton	List Price Each
------	-----------------	-----------------------------------	-------------------	--------------------



Part No. NH 1
No-Hub Coupling

1½"	00097	.2	100	\$ 14.45
2 x 1½"	00099	.4	100	16.85
2"	00098	.3	100	14.45
3 x 2"	00101	.4	100	26.20
3"	00100	.3	100	17.25
4 x 3"	00103	.8	100	31.10
4"	00102	.7	100	20.40
5"	00104	.9	20	49.60
6"	00105	1.0	20	51.70
8"	00106	1.4	10	97.60
10"	00107	1.7	10	128.90

NO-HUB COUPLING

FEATURES

- Bi-directional corrugations help eliminate wrinkling and bunching of shield.
- Bi-directional shield corrugation provides exceptional grip on the gasket to minimize movement.
- Clamps use mechanical interlocking housing to band construction. One-piece housing cannot come apart under high loading.
- Floating eyelet clamp-to-shield construction provides uniform take-up by permitting the band to move independently of the shield.

MATERIALS

- Band - Type 301 AISI Stainless Steel 1/2" Wide
- Screw Housing - Type 301 AISI Stainless Steel
- Screw - Type 305 AISI Stainless Steel
- Shield - Type 301 AISI Stainless Steel

SPECIFICATIONS

Couplings Conform To The Requirements Of:

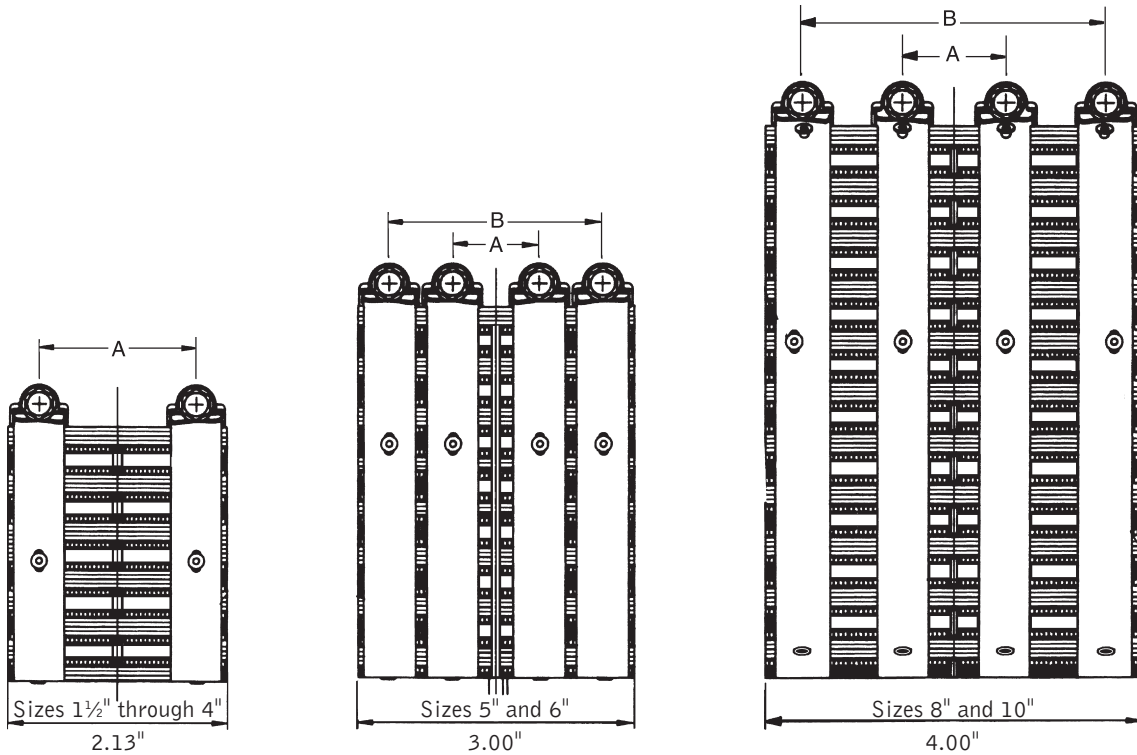
- CISPI 310
- ASTM C 1277
- UPC Listed

Gaskets Conform To ASTM C 564

Charlotte Pipe and Foundry Company strongly recommends that its cast iron pipe and fittings be joined with shielded hubless couplings manufactured in accordance with CISPI 310 or ASTM C 1277. Failures in installations using couplings not supplied by Charlotte Pipe® are not the responsibility of this Company.

You can't beat the system.®

NO-HUB COUPLING DIMENSIONS



Note: The A and B callouts above refer to the tightening sequence. Please refer to Charlotte Pipe's Cast Iron Technical Manual for detailed tightening instructions.

SIZE	SHIELD WIDTH	SHIELD THICKNESS	CLAMP WIDTH	NUMBER OF CLAMPS
1 1/2"	2.13"	.0075" +/- .001"	.500"	2
2"	2.13"	.0075" +/- .001"	.500"	2
3"	2.13"	.0075" +/- .001"	.500"	2
4"	2.13"	.0075" +/- .001"	.500"	2
5"	3.00"	.0075" +/- .001"	.500"	4
6"	3.00"	.0075" +/- .001"	.500"	4
8"	4.00"	.0075" +/- .001"	.500"	4
10"	4.00"	.0075" +/- .001"	.500"	4

! WARNING

Use of compressed air or gas in cast iron pipe or fittings can result in explosive failures and cause severe injury or death.

AIR/GAS



- NEVER use compressed air or gas in cast iron pipe or fittings.
- NEVER test cast iron pipe or fittings with compressed air or gas, or air over water boosters.
- ONLY use cast iron pipe for water or approved chemicals.