

"x" DIMENSION

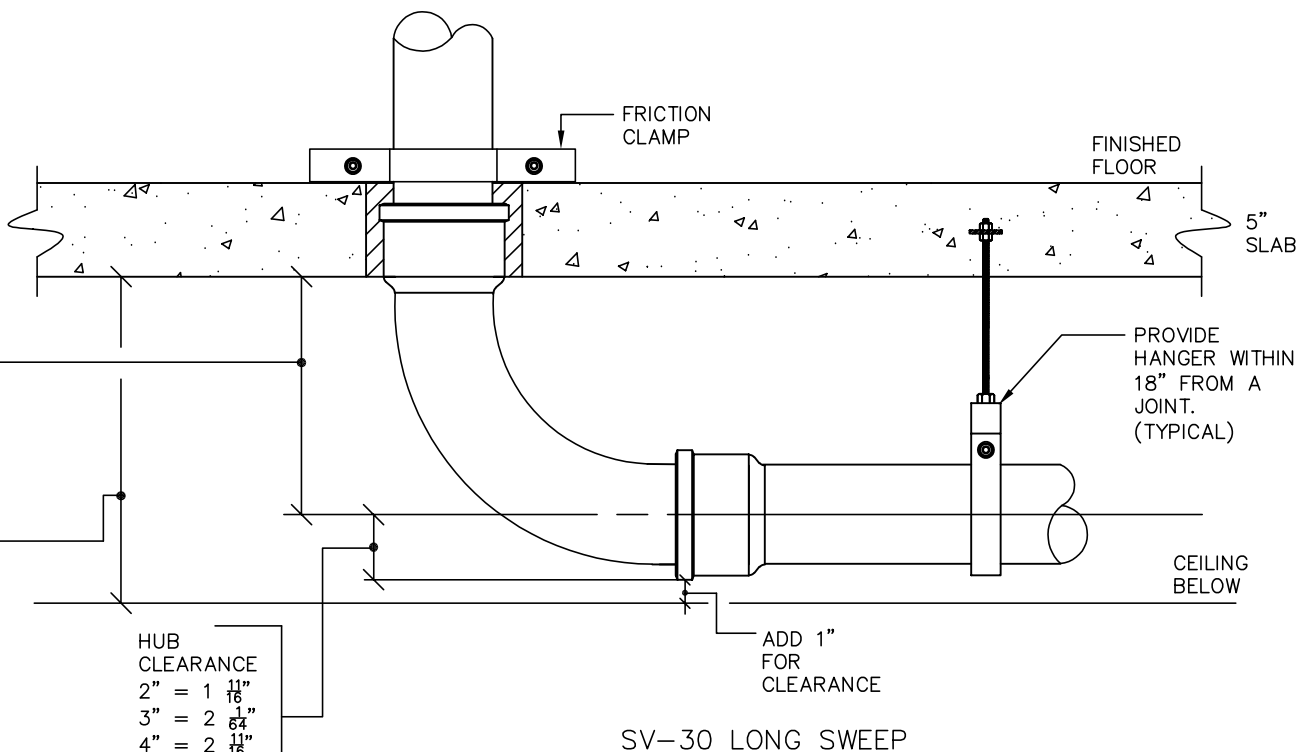
2"	= 8 ¹ / ₄ "
3"	= 9 ¹ / ₂ "
4"	= 9 ³ / ₄ "
5"	= 10 ¹ / ₂ "
6"	= 10 ³ / ₄ "
8"	= 11 ¹ / ₂ "
10"	= 12 ¹ / ₂ "
12"	= 13 ¹ / ₂ "
15"	= 15 ¹ / ₂ "

MINIMUM ALLOWABLE CLEARANCE

2"	= 11"
3"	= 12 ¹ / ₄ "
4"	= 13 ³ / ₁₆ "
5"	= 14 ¹ / ₄ "
6"	= 15 ³ / ₁₆ "
8"	= 17 ¹ / ₂ "
10"	= 19 ⁵ / ₈ "
12"	= 20 ³ / ₈ "
15"	= 25"

HUB CLEARANCE

2"	= 1 ¹¹ / ₁₆ "
3"	= 2 ¹ / ₈ "
4"	= 2 ¹¹ / ₁₆ "
5"	= 3 ¹ / ₈ "
6"	= 3 ¹¹ / ₁₆ "
8"	= 4 ⁷ / ₈ "
10"	= 6"
12"	= 7"
15"	= 8 ³ / ₄ "



SV-30 LONG SWEEP

NOTE:
 RESTRAINT IS REQUIRED ON ALL PIPE 5" AND LARGER AT ALL BRANCH TAKE-OFFS, AND CHANGES IN DIRECTION TO PROTECT AGAINST HORIZONTAL MOVEMENT AND JOINT SEPARATION

05/02/20

NOTICE: THE INFORMATION ON THIS PAGE PROVIDES GENERAL GUIDELINES. IT SHOULD BE USED ONLY AS A REFERENCE AND NOT AS A GAURANTEE OF PERFORMANCE. SPECIFIC INSTALLATION INSTRUCTIONS AND TECHNIQUES MAY BE REQUIRED AS A RESULT OF LOCAL PLUMBING AND BUILDING CODES, ENGINEERING SPECIFICATIONS AND INSTRUCTIONS.

CPF-13

START OF ELEVATION
 USING SV-30 LONG
 SWEEP

CHARLOTTE
 PIPE AND FOUNDRY COMPANY