

"E" DIMENSION

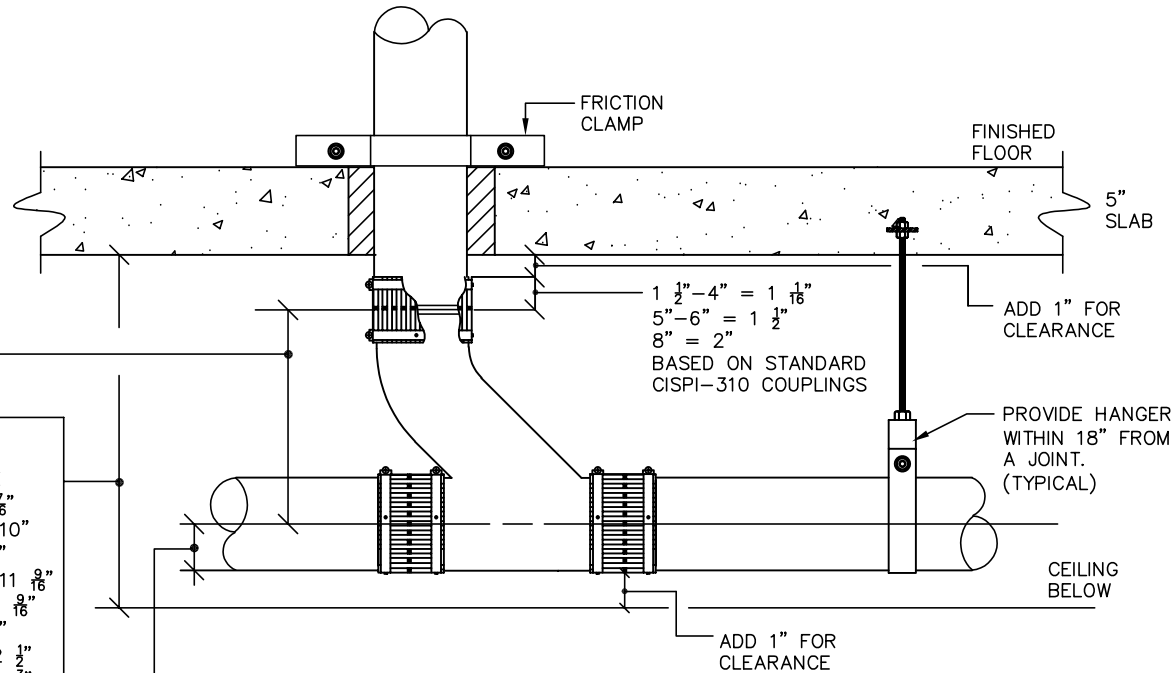
1 1/2" = 5 3/8"
2" x 1 1/2" = 5 7/8"
2" = 6 1/8"
3" x 1 1/2" = 6 3/4"
3" = 8"
4" x 2" = 7 1/4"
4" x 3" = 8 1/2"
4" = 10"
5" x 2" = 7 3/4"
5" x 3" = 9"
5" x 4" = 10 1/2"
5" = 12 1/2"
6" x 2" = 8 1/4"
6" x 3" = 9 1/2"
6" x 4" = 11 1/2"
6" = 14 3/8"
8" x 4" = 11 5/8"
8" x 6" = 13 3/8"
8" = 15 9/16"

MINIMUM ALLOWABLE CLEARANCE

1 1/2" = 9 7/16"
2" x 1 1/2" = 10"
2" = 10 7/16"
3" x 1 1/2" = 11 9/16"
3" x 2" = 11 9/16"
3" = 12 13/16"
4" x 2" = 12 1/2"
4" x 3" = 13 1/4"
4" = 15 1/4"
5" x 2" = 13 9/16"
5" x 3" = 14 13/16"
5" x 4" = 16 3/16"
5" = 18 3/4"
6" x 2" = 15 1/16"
6" x 3" = 16 5/16"
6" x 4" = 17 13/16"
6" x 5" = 20 1/4"
6" = 21 3/8"
8" x 4" = 19"
8" x 6" = 21 1/2"
8" = 24 3/16"

HORIZONTAL CLEARANCE

1 1/2" = 1"
2" = 1 1/4"
3" = 1 3/4"
4" = 2 1/16"
5" = 2 3/16"
6" = 3 1/4"
8" = 4"



NH-22 COMBO WYE  
CLEARANCE REQUIRMENTS

NOTE:  
RESTRAINT IS REQUIRED ON ALL PIPE 5" AND LARGER AT ALL BRANCH TAKE-OFFS, AND CHANGES IN DIRECTION TO PROTECT AGAINST HORIZONTAL MOVEMENT AND JOINT SEPARATION

06/02/20

NOTICE: THE INFORMATION ON THIS PAGE PROVIDES GENERAL GUIDELINES. IT SHOULD BE USED ONLY AS A REFERENCE AND NOT AS A GAURANTEE OF PERFORMANCE. SPECIFIC INSTALLATION INSTRUCTIONS AND TECHNIQUES MAY BE REQUIRED AS A RESULT OF LOCAL PLUMBING AND BUILDING CODES, ENGINEERING SPECIFICATIONS AND INSTRUCTIONS.

**CPF-20**

START OF ELEVATION  
USING NH-22  
COMBO WYE

**CHARLOTTE**  
PIPE AND FOUNDRY COMPANY