

SUBMITTAL FOR CHARLOTTE® EZS 800D STARTER FITTING

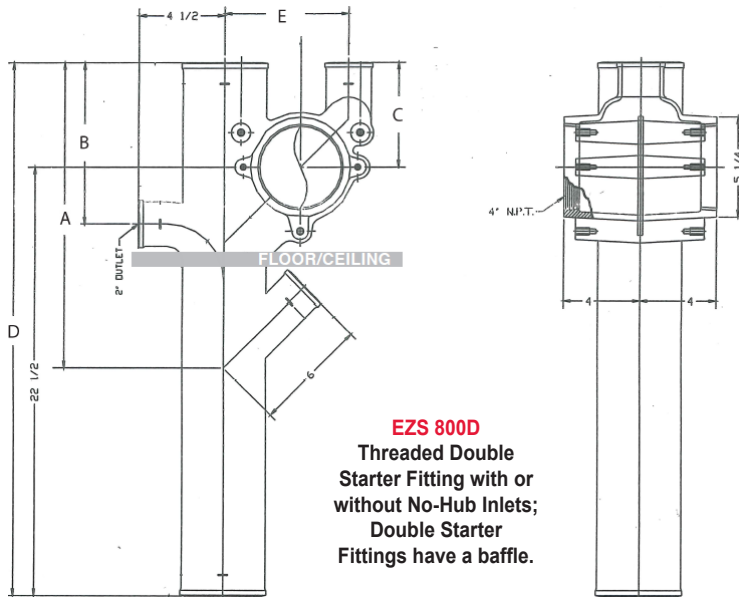
Date: _____

Job Name: _____

Location: _____

Engineer: _____

Contractor: _____



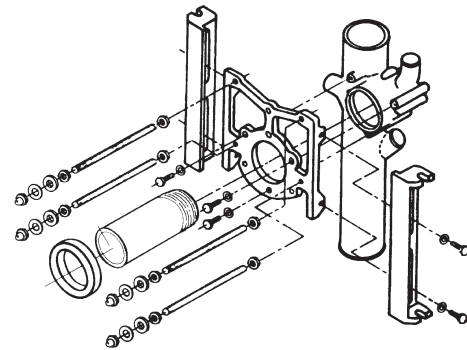
Part No.	Size	A	B	C	D	E	Weight
EZS 800D	4x28	16	0	5 1/2	28	6 1/2	42.0
EZS 800D	4x28	16	8 1/2	5 1/2	28	6 1/2	42.0

ENGINEERING SPECIFICATION:
Part NO. EZS 800D Cast Iron Threaded Double Starter Fitting with or without 2" No-Hub Inlets. Designed for use above the floor with back-outlet, back-to-back water closets. Manufactured in accordance with CISPI 301.

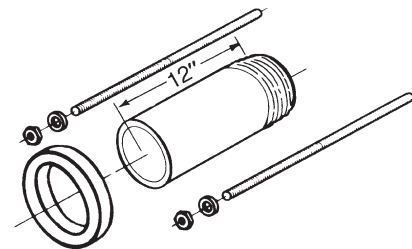
FOR WALL-HUNG BACK OUTLET APPLICATIONS: Contractor shall provide EZS 800D fitting with EZS 22 Support Frame and EZS 24 Trim Package. Installation shall be for applications not exceeding 500 lbs.

FOR FLOOR MOUNTED BACK OUTLET APPLICATIONS: Contractor shall provide EZS 800D fitting with EZS 23 Trim Package.

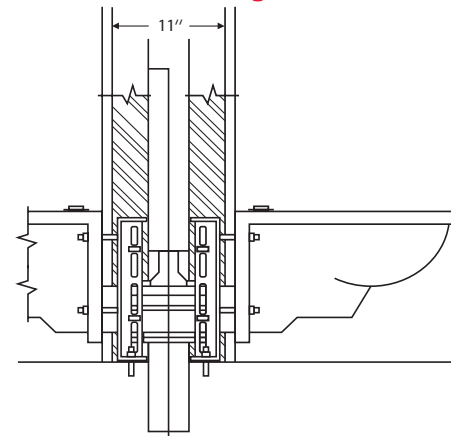
EZS 22 Support Frame and EZS 24 Trim Package for Wall-Hung, Back-Outlet Water Closet Installations Shown



EZS 23 Trim Package for Floor-Mounted, Back-Outlet Water Closet Installations Shown



Minimum Space Requirements for EZS 700 and EZS 800 Double Starter Fittings



For more information, call us at 1-800-438-6091 or log on to www.charlottepipe.com.

Charlotte is a registered trademark of Charlotte Pipe and Foundry Company.