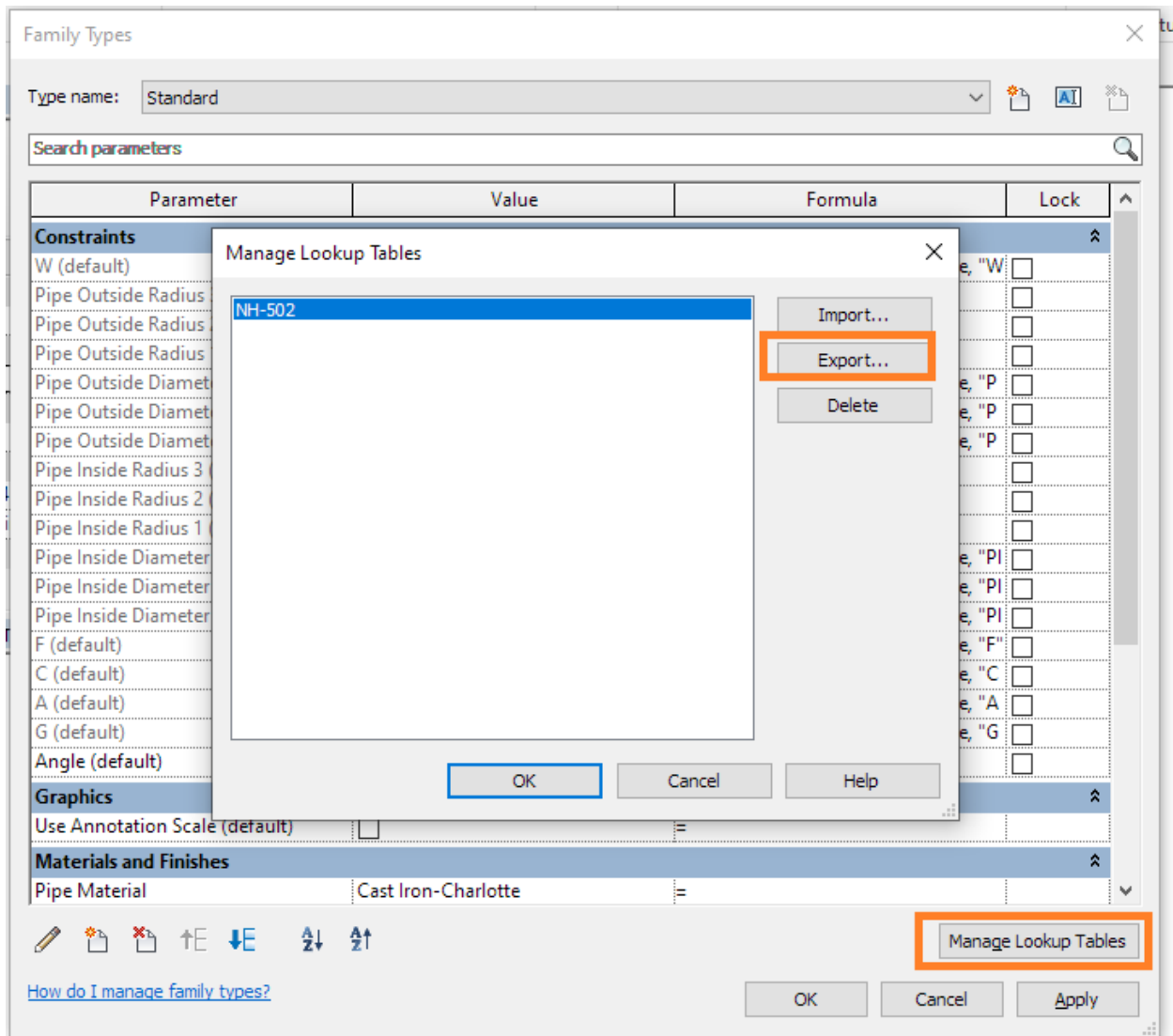


## Revit Pipe Family Lookup Table files

Starting in Revit 2013 Lookup Tables have been embedded in Pipe Fitting families and no longer required a separate Lookup Table file.

During a transition period, Charlotte Pipe provided Lookup Table files with Revit 2014 fittings. Since all fitting models were migrated to Revit 2015 (and later) Lookup Tables have no longer been provided as a separate asset.

A copy of the fitting's Lookup Table can be extracted from the fitting Family using the Manager Lookup Tables button.



In the Manage Lookup Tables dialog pick Export:

The Lookup Table is exported to a .csv file with the same name as the Lookup Table originally loaded into the fitting.